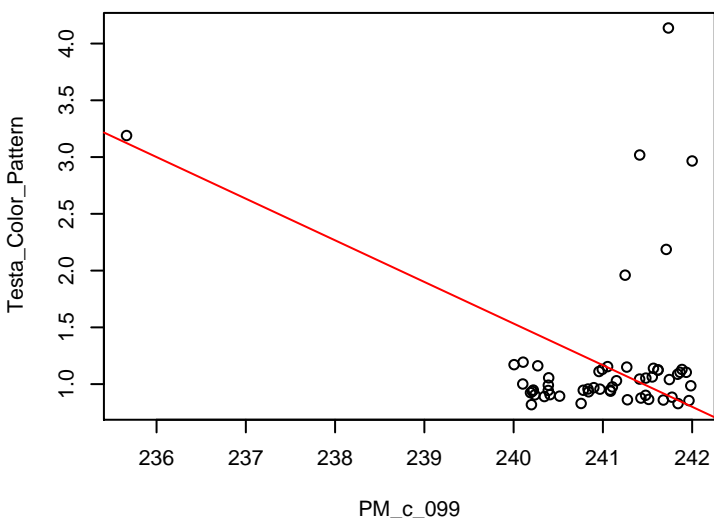
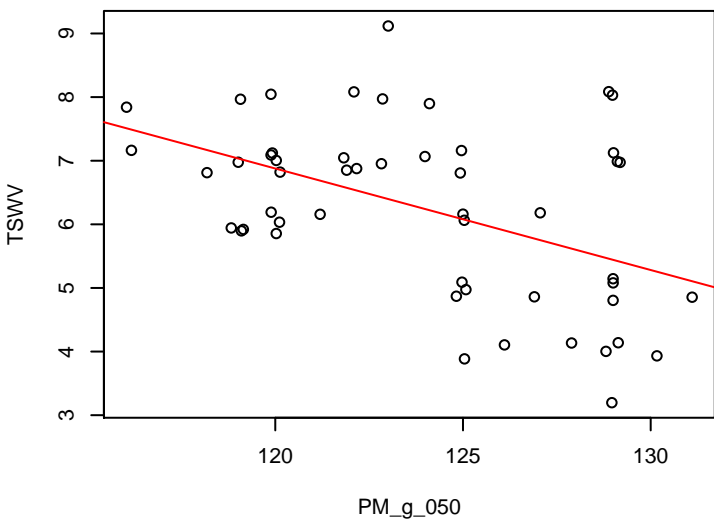


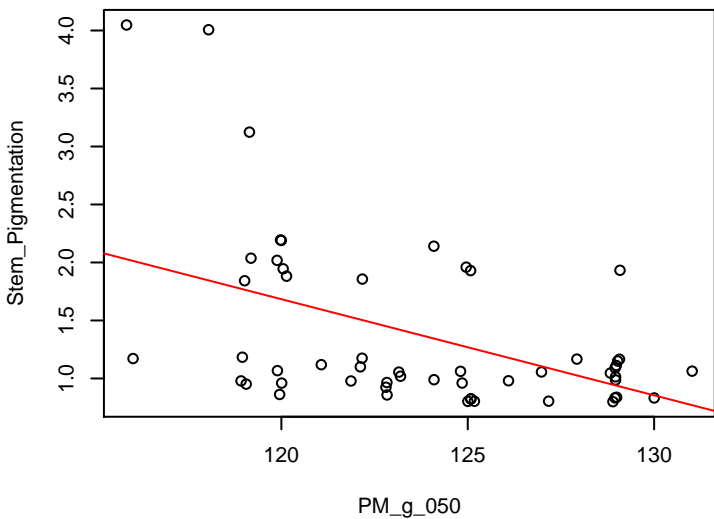
PM_c_099 Testa_Color_Pattern R2= 0.16 p= 0.0026



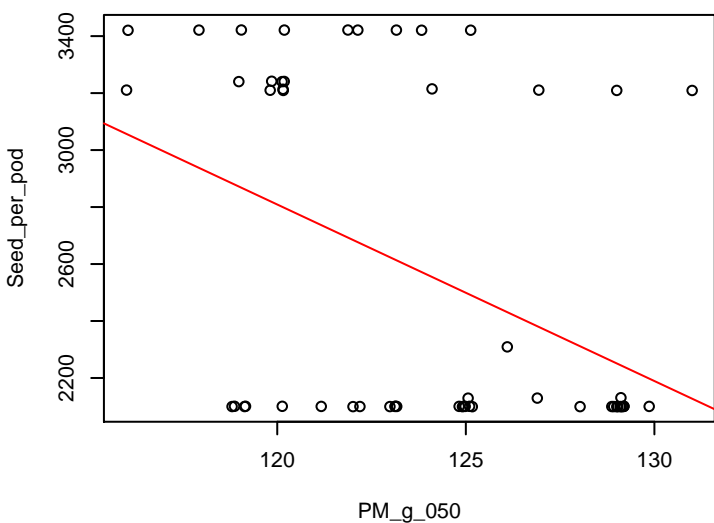
PM_g_050 TSWV R2= 0.23 p= 4e-04



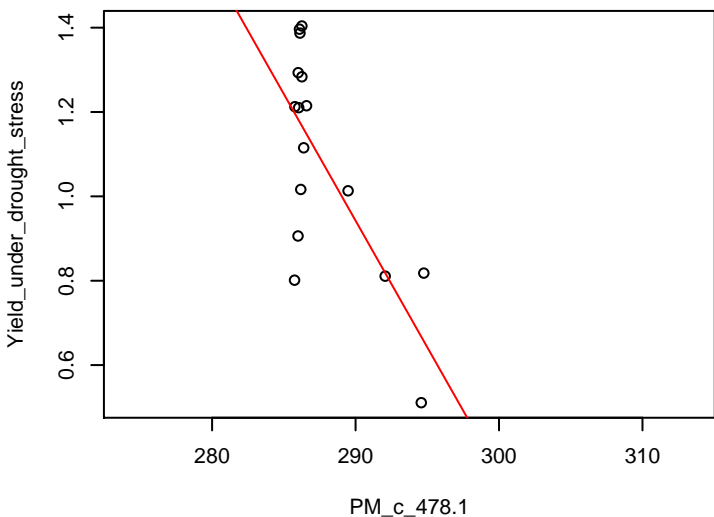
PM_g_050 Stem_Pigmentation R2= 0.23 p= 3e-04



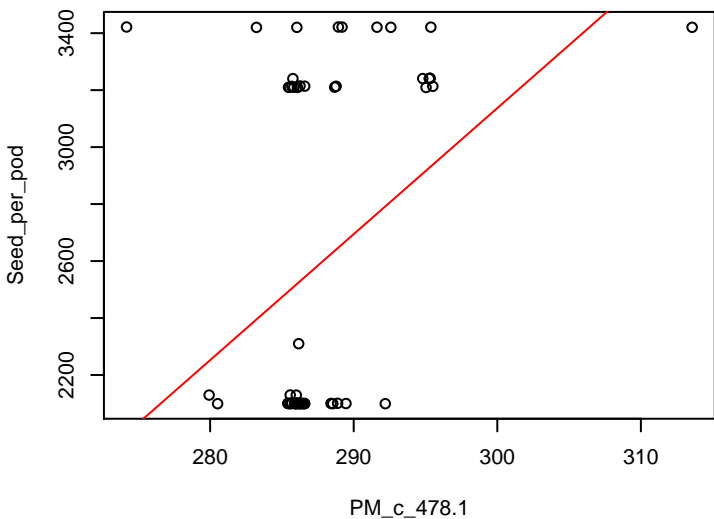
PM_g_050 Seed_per_pod R2= 0.18 p= 0.0014



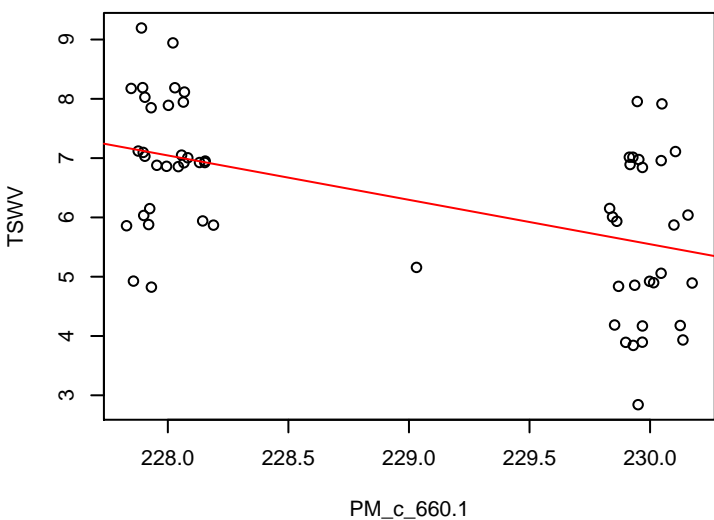
PM_c_478.1 Yield_under_drought_stress R2= 0.55 p= 0.0001



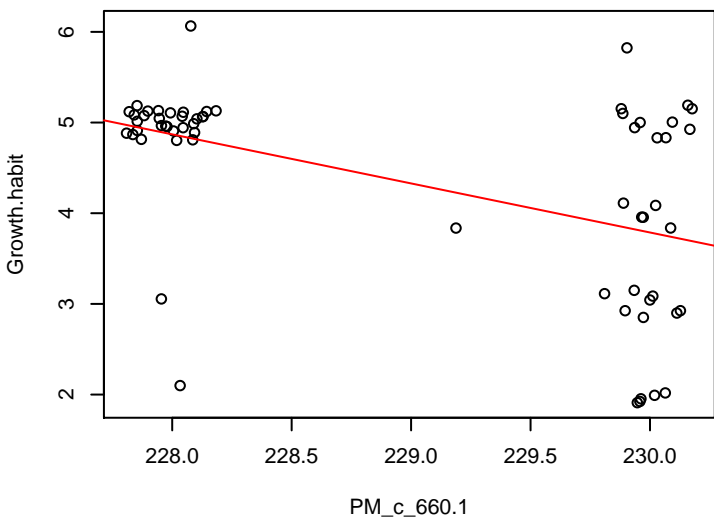
PM_c_478.1 Seed_per_pod R2= 0.14 p= 0.0028



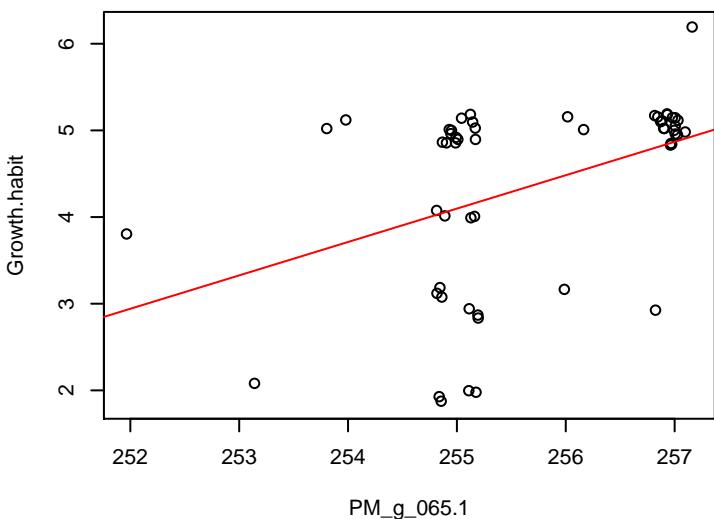
PM_c_660.1 TSWV R2= 0.28 p= 0



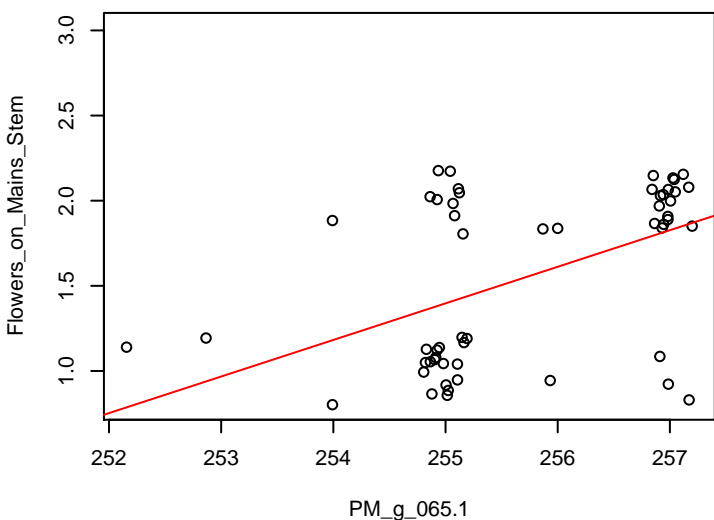
PM_c_660.1 Growth.habit R2= 0.25 p= 0



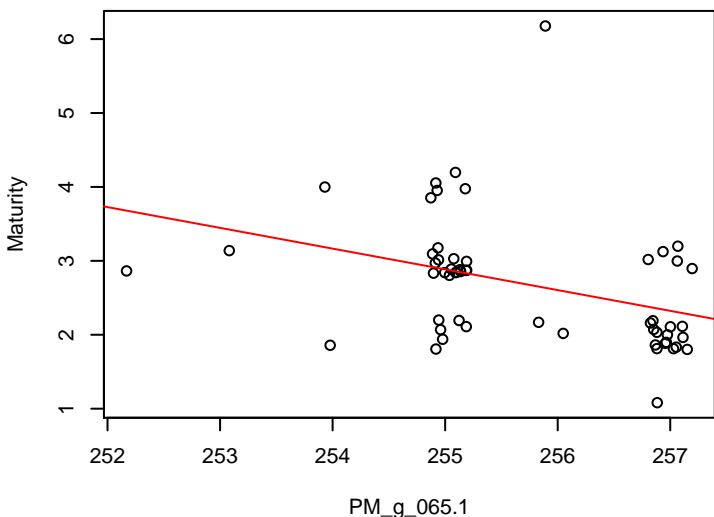
PM_g_065.1 Growth.habit R2= 0.19 p= 0.001



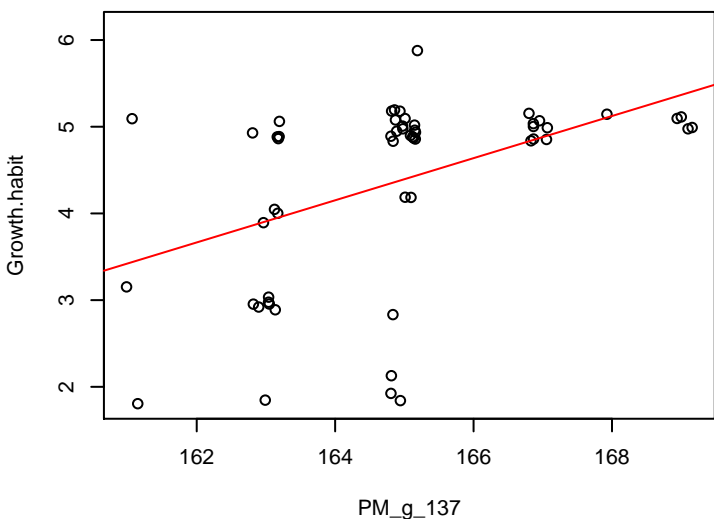
PM_g_065.1 Flowers_on_Mains_Stem R2= 0.26 p= 1e-04



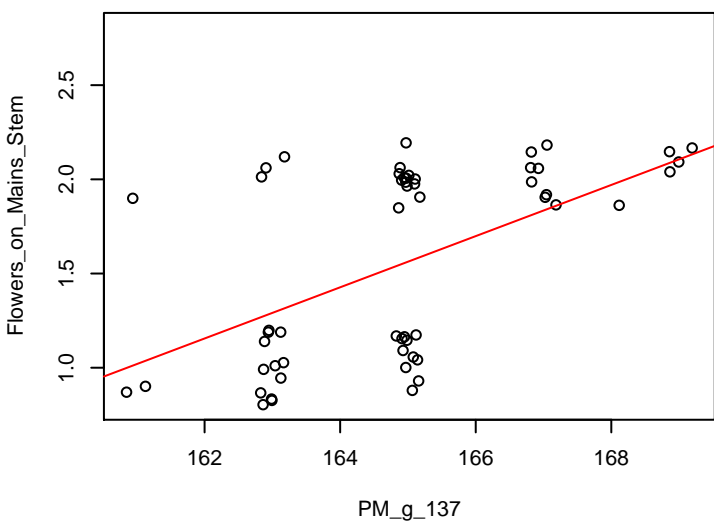
PM_g_065.1 Maturity R2= 0.16 p= 0.0027



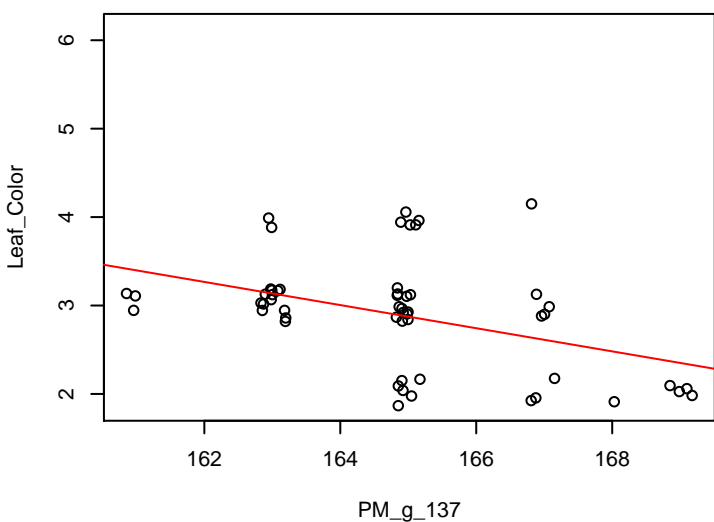
PM_g_137 Growth.habit R2= 0.21 p= 5e-04



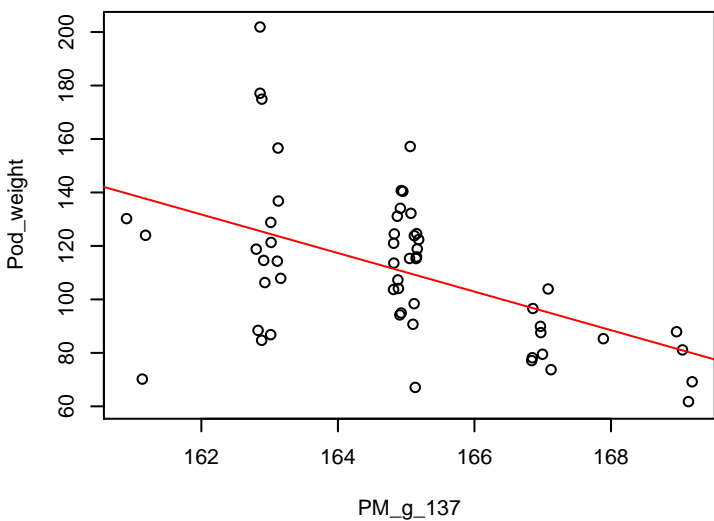
PM_g_137 Flowers_on_Mains_Stem R2= 0.29 p= 0



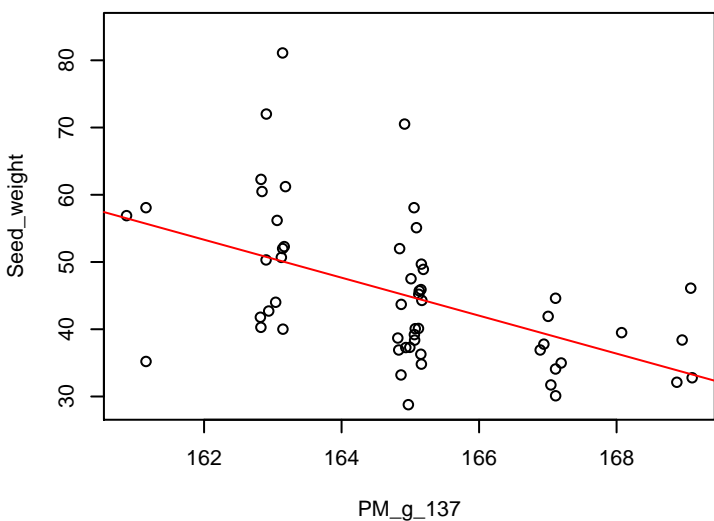
PM_g_137 Leaf_Color R2= 0.17 p= 0.0017



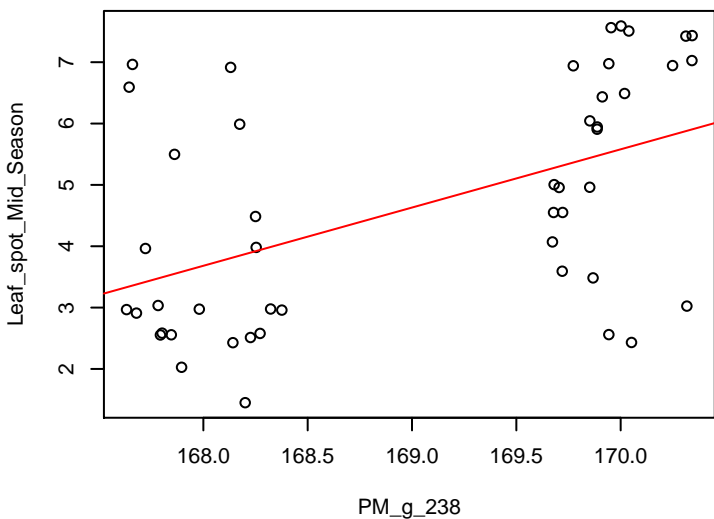
PM_g_137 Pod_weight R2= 0.24 p= 1e-04



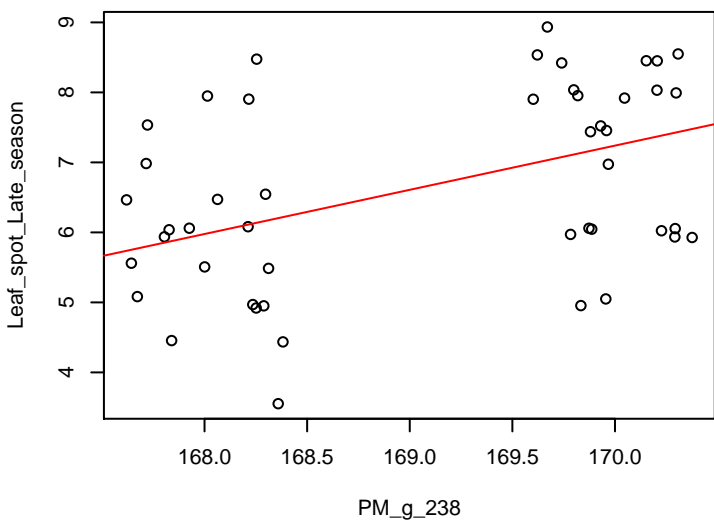
PM_g_137 Seed_weight R2= 0.25 p= 1e-04



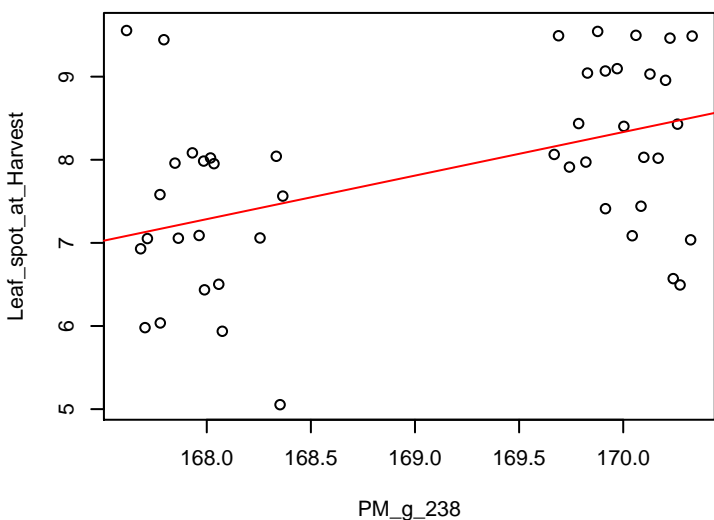
PM_g_238 Leaf_spot_Mid_Season R2= 0.25 p= 4e-04



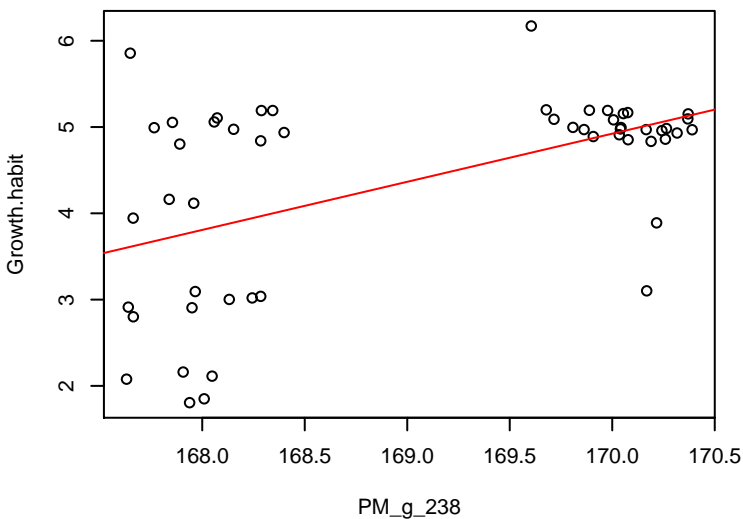
PM_g_238 Leaf_spot_Late_season R2= 0.21 p= 0.0011



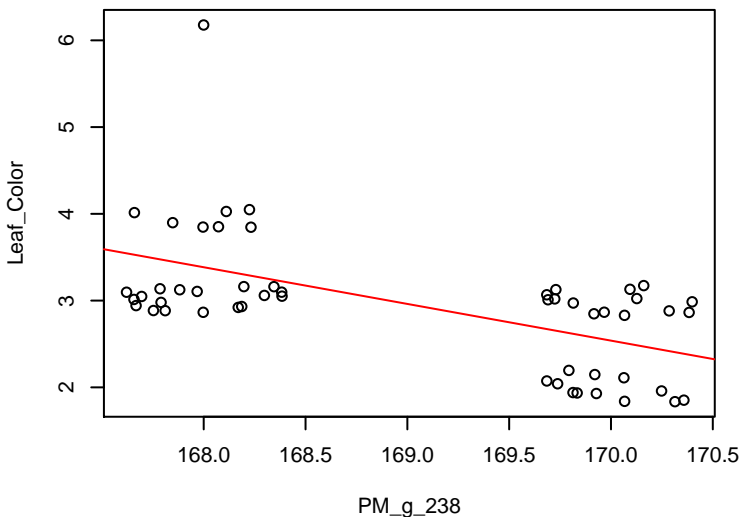
PM_g_238 Leaf_spot_at_Harvest R2= 0.21 p= 0.0015



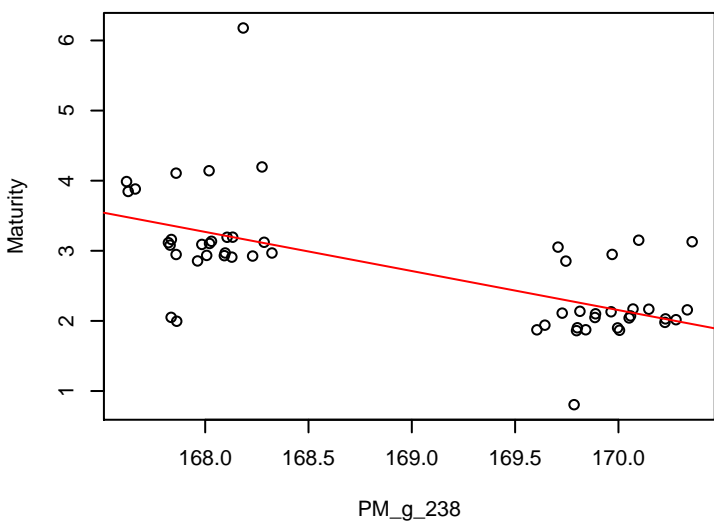
PM_g_238 Growth.habit R2= 0.26 p= 1e-04



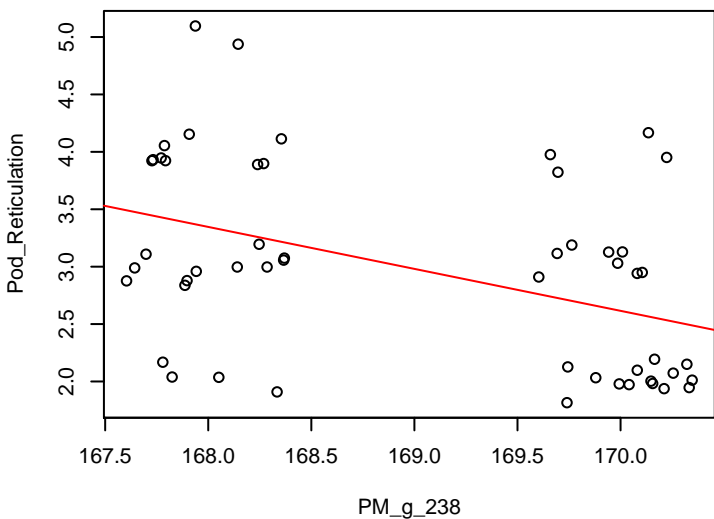
PM_g_238 Leaf_Color R2= 0.33 p= 0



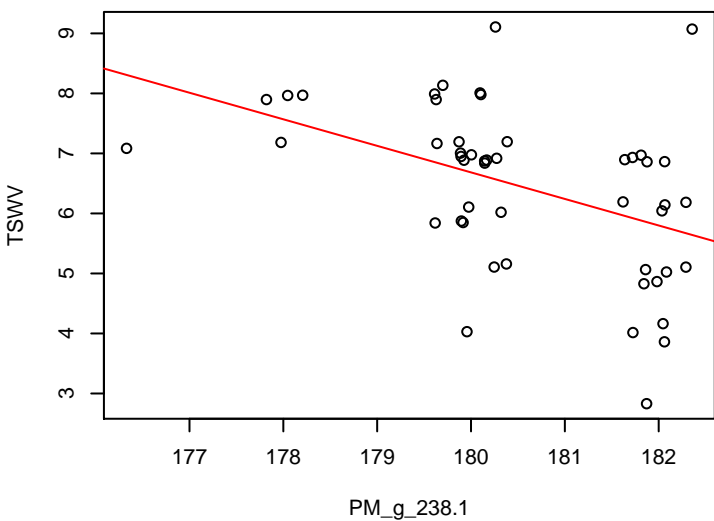
PM_g_238 Maturity R2= 0.44 p= 0



PM_g_238 Pod_Reticulation R2= 0.18 p= 0.0018



PM_g_238.1 TSWV R2= 0.2 p= 0.0011



PM_g_238.1 Flowers_on_Mains_Stem R2= 0.21 p= 7e-04

